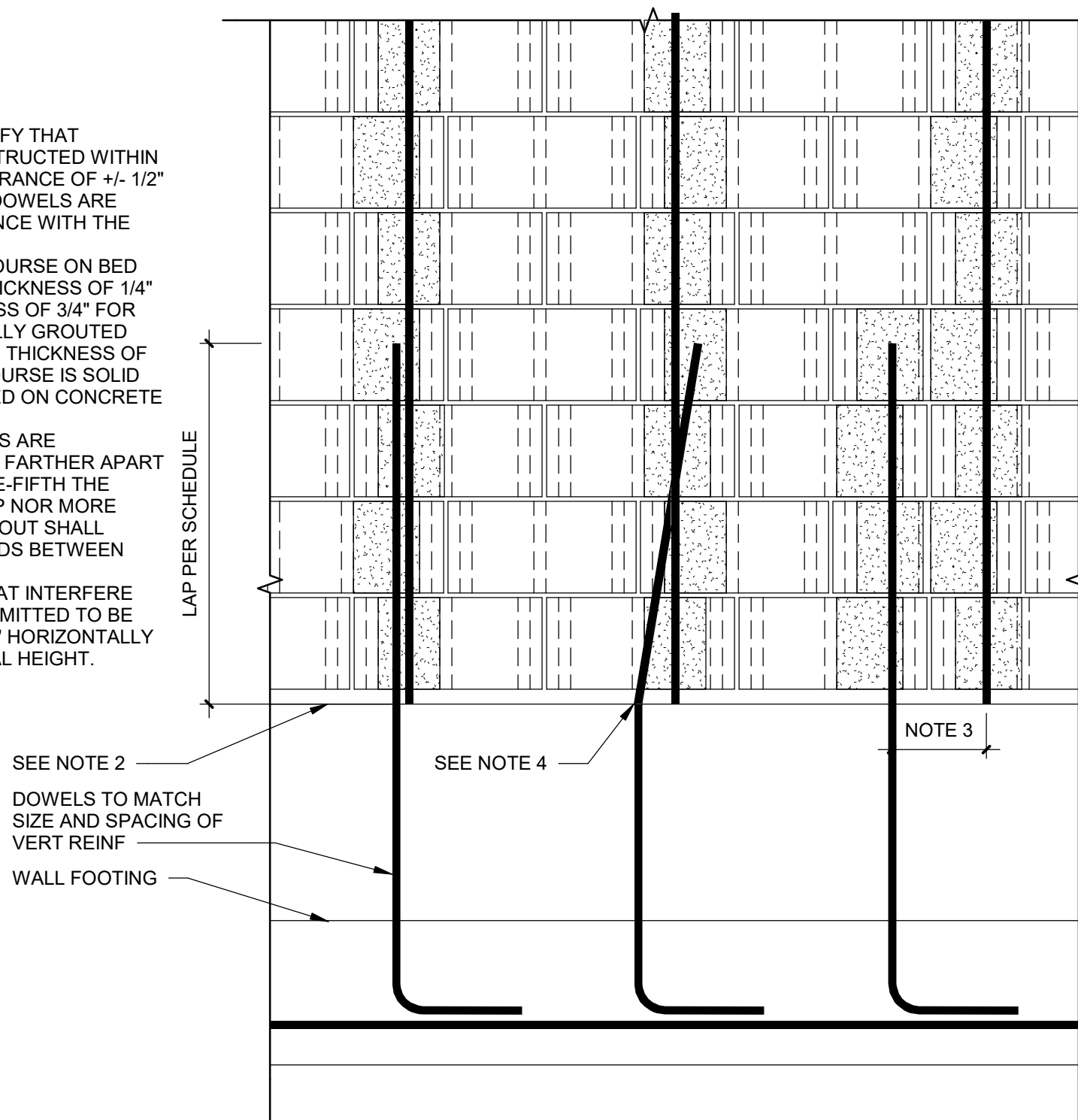


**NOTES:**

1. CONTRACTOR SHALL VERIFY THAT FOUNDATIONS ARE CONSTRUCTED WITHIN A LEVEL ALIGNMENT TOLERANCE OF +/- 1/2" AND THAT REINFORCING DOWELS ARE POSITIONED IN ACCORDANCE WITH THE PROJECT DRAWINGS.
2. CONSTRUCT STARTING COURSE ON BED JOINT WITH A MINIMUM THICKNESS OF 1/4" AND A MAXIMUM THICKNESS OF 3/4" FOR UNGROUTED AND PARTIALLY GROUTED MASONRY, OR A MAXIMUM THICKNESS OF 1-1/4" WHEN THE FIRST COURSE IS SOLID GROUTED AND SUPPORTED ON CONCRETE FOUNDATION.
3. NONCONTACT LAP SPLICES ARE PERMITTED IF SPACED NO FARTHER APART TRANSVERSELY THAN ONE-FIFTH THE SPECIFIED LENGTH OF LAP NOR MORE THAN 8". IN THIS CASE, GROUT SHALL COMPLETELY FILL ALL VOIDS BETWEEN BARS.
4. FOUNDATION DOWELS THAT INTERFERE WITH UNIT WEBS ARE PERMITTED TO BE BENT TO A MAXIMUM OF 1" HORIZONTALLY FOR EVERY 6" OF VERTICAL HEIGHT.



DISCLAIMER: The Block Design Collective ("BDC") does not make any representations or warranties with respect to the accuracy or suitability of this information, and persons making use of this information do so at their own risk. BDC disclaims liability for damages of any kind, including any special, indirect, or consequential damages, which may result from use of this information. This information is not to be interpreted as indicating compliance with, or waiver of, any applicable building code, ordinance, standard or law.

**7**

**TYPICAL FOUNDATION DOWEL**

SCALE: 1" = 1'-0"